



Sociedad Española  
de Reumatología -  
Colegio Mexicano  
de Reumatología

# Reumatología Clínica

www.reumatologiaclinica.org



Original article

## Autoantibodies to extractable nuclear antigens (ENAs) pattern in rheumatoid arthritis patients: Relevance and clinical implications

Yasser Emad<sup>a,b,\*</sup>, Yasser Ragab<sup>c,d</sup>, Nevin Hammam<sup>e,f</sup>, Nashwa El-Shaarawy<sup>g</sup>, Ossama Ibrahim<sup>h</sup>, Rania M. Gamal<sup>f</sup>, Magdy Abd-Elsalam<sup>i</sup>, Reem H.A. Mohammed<sup>a</sup>, Mona Hawass<sup>j</sup>, Johannes J. Rasker<sup>k</sup>

<sup>a</sup> Rheumatology Department, Faculty of Medicine, Cairo University, Cairo, Egypt

<sup>b</sup> Rheumatology Department, Dr. Erfan and Bagedo General Hospital, Jeddah, Saudi Arabia

<sup>c</sup> Radiology Department, Faculty of Medicine, Cairo University, Cairo, Egypt

<sup>d</sup> Radiology Department, Dr. Erfan and Bagedo General Hospital, Jeddah, Saudi Arabia

<sup>e</sup> Department of Pediatrics, Faculty of Medicine and Dentistry, University of Alberta, Edmonton, AB, Canada

<sup>f</sup> Rheumatology and Rehabilitation Department, Faculty of Medicine, Assiut University, Assiut, Egypt

<sup>g</sup> Rheumatology and Rehabilitation Department, Faculty of Medicine, Suez Canal University, Ismailia, Egypt

<sup>h</sup> Morecambe Bay University Hospitals Lancaster, Lancashire, UK

<sup>i</sup> Chest Department, Faculty of Medicine, Ain Shams Faculty of Medicine, Cairo, Egypt

<sup>j</sup> Nephrology Department, Al-Shorta Hospital, Cairo, Egypt

<sup>k</sup> Faculty of Behavioural, Management and Social Sciences, Department Psychology, Health and Technology, University of Twente, Enschede, The Netherlands

### ARTICLE INFO

#### Article history:

Received 22 June 2019

Accepted 2 October 2019

Available online 4 December 2019

#### Keywords:

Rheumatoid arthritis (RA)

Rheumatoid factor (RF)

Anticitrullinated peptide/protein antibodies (ACPA)

Antinuclear antibody (ANA)

Extractable nuclear antigens (ENAs) autoantibodies

Anti-Jo-1 autoantibody

Anti-synthetase syndrome

Rheumatoid arthritis and anti-synthetase overlap

### ABSTRACT

**Objectives:** To study the frequency of different autoantibodies to extractable nuclear antigens (ENAs) in rheumatoid arthritis (RA) patients and to correlate findings with clinical manifestations, disease activity and radiological damage.

**Methods:** A total of 230 RA patients were included and 75 healthy controls. In all patients rheumatological assessment was done and routine laboratory investigations and immune profile were performed in both patients and controls, including: RF, ACPA, ANA and anti-ENAs (Ro/SSA, La/SSB, U1-RNP, anti-Jo-1 and anti-Sm). Radiological damage was scored using Sharp/van der Heijde, and disease activity was evaluated by DAS28-ESR and DAS28-CRP.

**Results:** RF was positive in 101 (43.9%), ACPA in 220 (95.7%), ANA in 58 (25.2%), anti Ro in 31 (13.5%), anti-La in 10 (4.3%), anti-Jo1 in 5 (2.2%) and anti-RNP in 2 (0.9%). *Anti-Ro/SSA* positively correlated with sicca symptoms ( $p = .02$ ), RF titer ( $p < .001$ ), ANA ( $p < .001$ ), DAS28-ESR ( $p = .026$ ), and DAS28-CRP ( $p = .003$ ). *Anti-La* antibodies correlated positively with SJC ( $p = .001$ ), TJC ( $p = .001$ ), ANA ( $p < .001$ ), DAS-28 ESR ( $p = .007$ ). *Anti-Jo-1* correlated positively with interstitial lung disease (ILD) ( $p \leq .001$ ), RF titer ( $p = .037$ ) and ANA ( $p \leq .001$ ). *Anti-RNP* antibodies correlated positively with disease duration ( $p \leq .001$ ), ACPA titer ( $p \leq .001$ ) and ANA ( $p = .014$ ). In the controls ANA was positive in two (2.7%), anti-Ro in three (4%), and none of the controls tested positive for other autoantibodies.

**Conclusions:** In RA patients, positive ANA is frequent and positively associated with anti-Ro, anti-La and anti-Jo1 autoantibodies. Screening for autoantibodies against other anti-ENAs seems mandatory in RA patients especially when ANA is positive. RA cases with positive Anti-Jo-1 may develop anti synthetase syndrome and ILD.

© 2019 Elsevier España, S.L.U. and Sociedad Española de Reumatología y Colegio Mexicano de Reumatología. All rights reserved.

## Patrón de autoanticuerpos contra antígenos nucleares extraíbles (ENA) en pacientes con artritis reumatoide: relevancia e implicaciones clínicas

### RESUMEN

**Objetivos:** Estudiar la frecuencia de diferentes autoanticuerpos frente a antígenos nucleares extraíbles (ENA) en pacientes con artritis reumatoide (AR) y relacionar los hallazgos con las manifestaciones clínicas, la actividad de la enfermedad y el daño radiológico.

#### Palabras clave:

Artritis reumatoide (AR)

Factor reumatoide (RF)

\* Corresponding author.

E-mail address: [yasseremad68@gmail.com](mailto:yasseremad68@gmail.com) (Y. Emad).

<https://doi.org/10.1016/j.reuma.2019.10.001>

1699-258X/© 2019 Elsevier España, S.L.U. and Sociedad Española de Reumatología y Colegio Mexicano de Reumatología. All rights reserved.

Anticuerpos péptido/proteína anticitrulinados (ACPA)  
 Anticuerpo antinuclear (ANA)  
 Antígenos nucleares extraíbles (ENA) autoanticuerpos  
 Anti Jo-1 autoanticuerpo  
 Síndrome anti-sintetasa  
 Artritis reumatoide y superposición de sintetasa

**Métodos:** Se incluyeron un total de 230 pacientes con AR y 75 controles sanos. En todos los pacientes, la evaluación reumatológica, las investigaciones de laboratorio de rutina y el perfil inmune se realizaron tanto en pacientes como en controles, incluidos: RF, ACPA, ANA y anti-ENA (Ro/SSA, La/SSB, U1-RNP, anti-Jo-1 y anti-sm). El daño radiológico se puntuó con Sharp/van der Heijde y la actividad de la enfermedad se evaluó mediante DAS28-ESR y DAS28-CRP.

**Resultados:** La RF fue positiva en 101 (43.9%), ACPA en 220 (95.7%), ANA en 58 (25.2%), anti Ro en 31 (13.5%), anti-La en 10 (4.3%), anti-Jo1 en 5 (2.2%) y anti-RNP en 2 (0.9%). Anti-Ro/SSA se correlacionó positivamente con los síntomas de sicca ( $p = .02$ ), el título de RF ( $p < .001$ ), ANA ( $p < .001$ ), DAS28-ESR ( $p = .026$ ) y DAS28-CRP ( $p = .003$ ). Los anticuerpos anti-La se correlacionaron positivamente con SJC ( $p = .001$ ), TJC ( $p = .001$ ), ANA ( $p < .001$ ), DAS-28 ESR ( $p = .007$ ). El anti-Jo-1 se correlacionó positivamente con la enfermedad pulmonar intersticial (EPI) ( $p \leq 0,001$ ), título de RF ( $p = 0,037$ ) y ANA ( $p \leq 0,001$ ). Los anticuerpos anti-RNP se correlacionaron positivamente con la duración de la enfermedad ( $p \leq 0,001$ ), el título de ACPA ( $p \leq 0,001$ ) y ANA ( $p = 0,014$ ). En los controles, ANA fue positivo en dos (2.7%), anti-Ro en tres (4%) y ninguno de los controles dio positivo para otros autoanticuerpos.

**Conclusiones:** En pacientes con AR, el ANA positivo es frecuente y se asocia positivamente con autoanticuerpos anti-Ro, anti-La y anti-Jo1. La detección de autoanticuerpos contra otros anti-ENA parece obligatoria en los pacientes con AR, especialmente cuando la ANA es positiva. Los casos de AR con Anti-Jo-1 positivo pueden desarrollar el síndrome de sintetasa e ILD.

© 2019 Elsevier España, S.L.U.

y Sociedad Española de Reumatología y Colegio Mexicano de Reumatología. Todos los derechos reservados.

## Introduction

Rheumatoid arthritis (RA) is a chronic inflammatory autoimmune disease characterized by swelling, tenderness, progressive destruction of synovial lined joints, and progressive disability.<sup>1</sup> RA is a disease with many faces, some of these correlate with the presence of certain autoantibodies for example anti Ro/SSA has an association with Sjögren's syndrome in RA.<sup>2–4</sup> The presence of anti-Jo-1 in RA patients may indicate an overlap between RA and anti-synthetase syndrome (ASS) especially in anticitrullinated peptide/protein antibodies (ACPA) positive cases.<sup>5–11</sup>

Extractable nuclear antigens (ENAs) are autoantibodies that react with proteins in the cell nucleus, these proteins collectively termed “extractable” because they can be isolated from cell nuclei using saline. Autoantibodies directed to intracellular components are a characteristic feature of antinuclear antibody (ANA)-associated rheumatic diseases (AARD), like systemic lupus erythematosus (SLE), systemic sclerosis (SSc), mixed connective tissue disease (MCTD), primary Sjögren syndrome (pSS), and autoimmune inflammatory myositis (AIM). Some of these autoantibodies are highly specific for the individual AARD and included in the classification and/or diagnostic criteria for these autoimmune diseases.<sup>12</sup>

Autoantibodies against ENAs are best studied in SLE patients<sup>13–19</sup> and may appear many years before SLE diagnosis.<sup>15,16</sup> These autoantibodies to ENAs are associated with the pathogenesis of lupus nephritis and play important roles in the assessment of disease activity and/or severity.<sup>14</sup>

The finding of Anti-Jo-1 in RA patients<sup>11</sup> was one of the reasons we decided to perform the current study examining the prevalence of Jo-1 antibodies in a large series of RA patients, its clinical relevance and association with anti-Ro and anti-La and other ENA autoantibodies.<sup>11</sup> This study may lead to better understanding and early diagnosis and management of comorbidities.

Antinuclear antibodies in RA have been studied repeatedly since 1961 when Weir et al.<sup>20</sup> found, with little sensitive tests, that 14% of RA patients could be ANA positive. In the seventies more specific aspects based on an extractable nuclear antigen were studied. It was even suggested that ANA positive RA patients had a lupus like disease and should be treated differently, especially with corticosteroids.<sup>21</sup> Many studies were performed since regarding ANA and RA nuclear antigen (RANA) in RA patients, especially in

the 1980s, looking for correlations with for example rheumatoid factor, HLA factors, Epstein Barr virus.<sup>22–25</sup>

Only few studies have systematically investigated the different types of autoantibodies against ENA in a large series of RA patients and correlating the findings with clinical manifestations. The aim of the current study was to examine the prevalence of autoantibodies against ENAs (Ro/SSA, La/SSB, UI-RNP, Jo-1 and anti-Sm) in a cohort of RA patients and to correlate the presence of these autoantibodies with different clinical manifestations, disease activity indices and radiological damage.

## Patients and methods

### Clinical assessment

A total of 230 consecutive RA patients (females 177 (77%) and males 53 (23%)) could be included in the study, who visited the rheumatology clinics of the Rheumatology and Rehabilitation Department, Dr. Erfan and Bagedo General Hospital, Jeddah, Saudi Arabia. All fulfilled the 2010 ACR/EULAR classification criteria for RA.<sup>26</sup> Detailed rheumatological history and physical examination was carried out in all patients including the clinical variables: swollen joint count (SJC), tender joint count (TJC), and duration of morning stiffness in minutes. Also symptoms of Sjögren's syndrome were studied and relevant pulmonary symptoms. Special attention was paid during clinical assessment to carefully exclude any symptoms or signs suggestive of these disorders, e.g. Raynaud's disease, swollen puffy fingers, proximal muscle pain or tenderness, Gottron's sign, telangiectasia, sclerodactyly and subcutaneous calcifications, because of the known associations of these syndromes with anti-ENA autoantibodies tested.

The study was performed in close cooperation with the departments of rheumatology, and internal medicine in the universities of Cairo, Assiut and Ismaila in Egypt. All patients gave informed written consent to be enrolled into the study according to the Declaration of Helsinki.

As controls 75 healthy subjects were also included matched for age and sex with the RA group of patients. They were 57 (76%) females and 18 (24%) males; their mean age in years (SD) was  $44.87 \pm (7.74)$ . All control subjects had no previous history of any joint swelling and with no symptoms or signs suggestive of



**Fig. 1.** (A) First RA case with anti-Jo-1 positive and showing the typical radiological features of RA in the form of intercarpaljoints, radio-carpal, and carpometacarpal joints erosions PIPs and MCPs erosions with juxta-articular osteoporosis and decreased joint spaces, MCPs subluxations and Z thumb deformity; (B) Second case with RA, and positive anti-Jo-1 showing intercarpal, radio-carpal, and carpometacarpal joints erosions, PIPs and MCP jointserosions with juxta-articular osteoporosis and joint spaces narrowing, consistent with the diagnosis of RA.

autoimmune disease and negative family history of RA or other autoimmune disease.

#### Laboratory investigations

Baseline routine laboratory at inclusion for the RA group were: erythrocyte sedimentation rate (ESR) first hour (mm/h), C-reactive protein (CRP) levels (mg/dl), complete blood count, complete liver and kidney function tests, CPK and urine analysis.

Rheumatoid factor (RF) and ACPA were tested in all patients. Serum samples were collected and stored at  $-80^{\circ}\text{C}$ . ACPA (IgG) were measured using commercially available second-generation ELISA kits (Diastat<sup>TM</sup> Axis, Shield Diagnostics, Dundee, Scotland). ACPA assay was performed according to the manufacturer's instructions, and values were expressed in units per millilitre (U/ml) and were considered to be positive at a cut-off value of more than 5 U/ml. The IgM-RF was assayed using a quantitative immunonephelometric test for RF and was considered positive when values were higher than the cut-off value of the kit (15 U/ml).

#### Anti-extractable nuclear antigens (ENA) assay

ENA autoantibodies as well as ANA were tested for both the RA group of patients and the normal healthy control subjects for effective validation of the immunological laboratory findings. The following ENA autoantibodies to Smith (anti-Sm), ribonucleoproteins (anti-U1-RNP), Ro/SSA (anti-Ro/SSA), SSB/La (anti-La/SSB) and anti-Jo-1 were assessed using Alegria<sup>®</sup> assay which features bar-coded 8-well-microstrips, called Alegria<sup>®</sup> Test Strips. The Alegria<sup>®</sup> test strip holds a complete set of reagents including enzyme conjugate, enzyme substrate, sample buffer and a test specific control. The determination is based on an indirect enzyme linked immune reaction with the following steps: antibodies present in positive samples bind to the antigen coated on the surface of the two reaction wells forming an antibody antigen complex. After incubation, a first washing step removes unbound and unspecific bound molecules. Subsequently added enzyme conjugate binds to the immobilized antibody-antigen complex. After incubation, a second washing step removes unbound enzyme conjugate. Addition of enzyme substrate solution results in hydrolysis and color development during incubation. The intensity of the blue color correlates with the concentration of the antibody-antigen-complex and can be measured photometrically at 650 nm. The calculation range of this assay is 0–200 U/ml [normal <15 U/ml, borderline 15–25 U/ml, elevated >25 U/ml].

#### Radiologic assessment

Standard X-rays of hands and wrists and of forefeet were made. Joint damage was assessed for all patients at the time of their inclusion in the study by the simplified radiological Sharp/Vander Heijde score (SHS).<sup>27</sup>

#### Statistical analysis

Analysis of data was performed with the statistical package for the social sciences (SPSS) version 15. As disease duration and most continuous laboratory and disease activity scores were positively skewed, these values were log-transformed (after adding 1 to eliminate zero values) to normalize their distribution before statistical analysis. Univariate Pearson's correlations were computed between ENAs and other clinical variables and disease activity indices ( $p$  values <.05 are accepted as statistically significant).

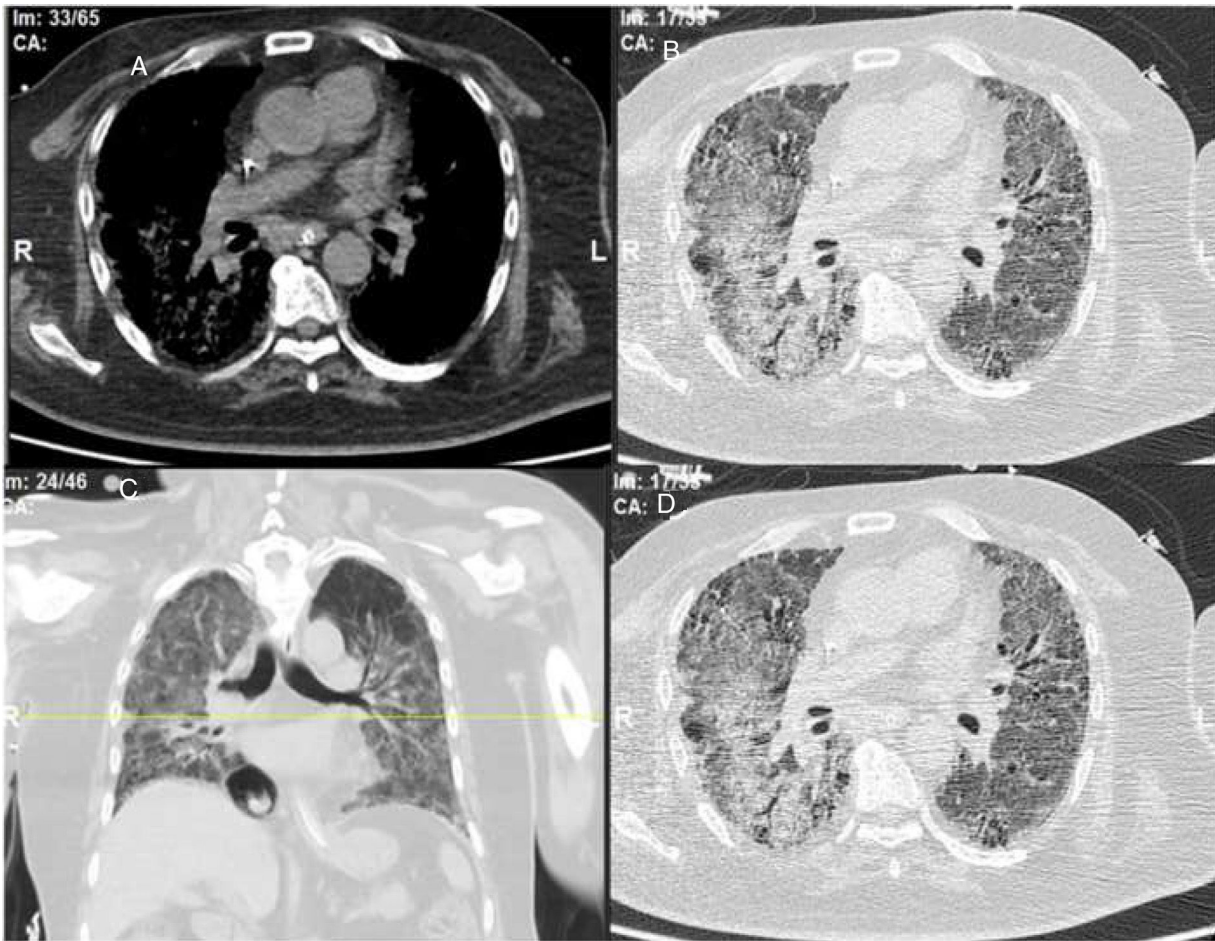
#### Ethics

The local ethical committee approved the study design. All patients and controls gave informed written consent to be enrolled into the study according to the Declaration of Helsinki.

#### Results

We could include 230 patients (female 177 (77%) and males 53 (23%)) with established RA, fulfilling the 2010 ACR/EULAR classification criteria for RA.<sup>12</sup> Their mean age was  $47.06 \pm 11.75$  years and disease duration  $64.11 \pm 54.72$  months. RF was positive in 101 (43.9%) and ACPA was positive in 220 (95.7%), while ANA was positive in 58 (25.2%), anti-Ro/SSA in 31 (13.5%), anti-La/SSB in 10 (4.3%), anti-RNP in 2 (.9%) and none of the patients showed anti-Sm antibodies. Anti-Jo-1 was positive in 5 (2.2%), none of them had increased CPK levels and all five cases showed typical erosive changes consistent with the diagnosis of RA (Fig. 1). Two out of the 5 cases with positive Anti-Jo-1 had ILD (Figs. 2 and 3). Detailed demographic features, clinical manifestations, laboratory investigations, SHS, drug therapy and disease activity scores are summarized in Table 1. In the controls ( $n = 75$ ), RF (low titer) was positive in 4, ANA was positive in two (2.7%), anti-Ro/SSA in three (4%), and none of the control group tested positive for anti-La/SSB, anti-Sm, anti-Jo-1, anti-U1RNP autoantibodies and none tested positive for ACPA.

Correlation coefficients between different autoantibodies against ENAs (Ro/SSA, La/SSB, U1RNP and Jo-1) and various demographic features, clinical manifestations, laboratory investigations, radiological and disease activity scores are detailed in Table 2.



**Fig. 2.** (A) Mediastinal window; (B, C) axial high-resolution lung window; (D) coronal reconstruction (lung window) showing extensive areas of ground glass veiling and opacification together with interstitial sub-pleural infiltrates (interstitial pneumonia and infiltrates).

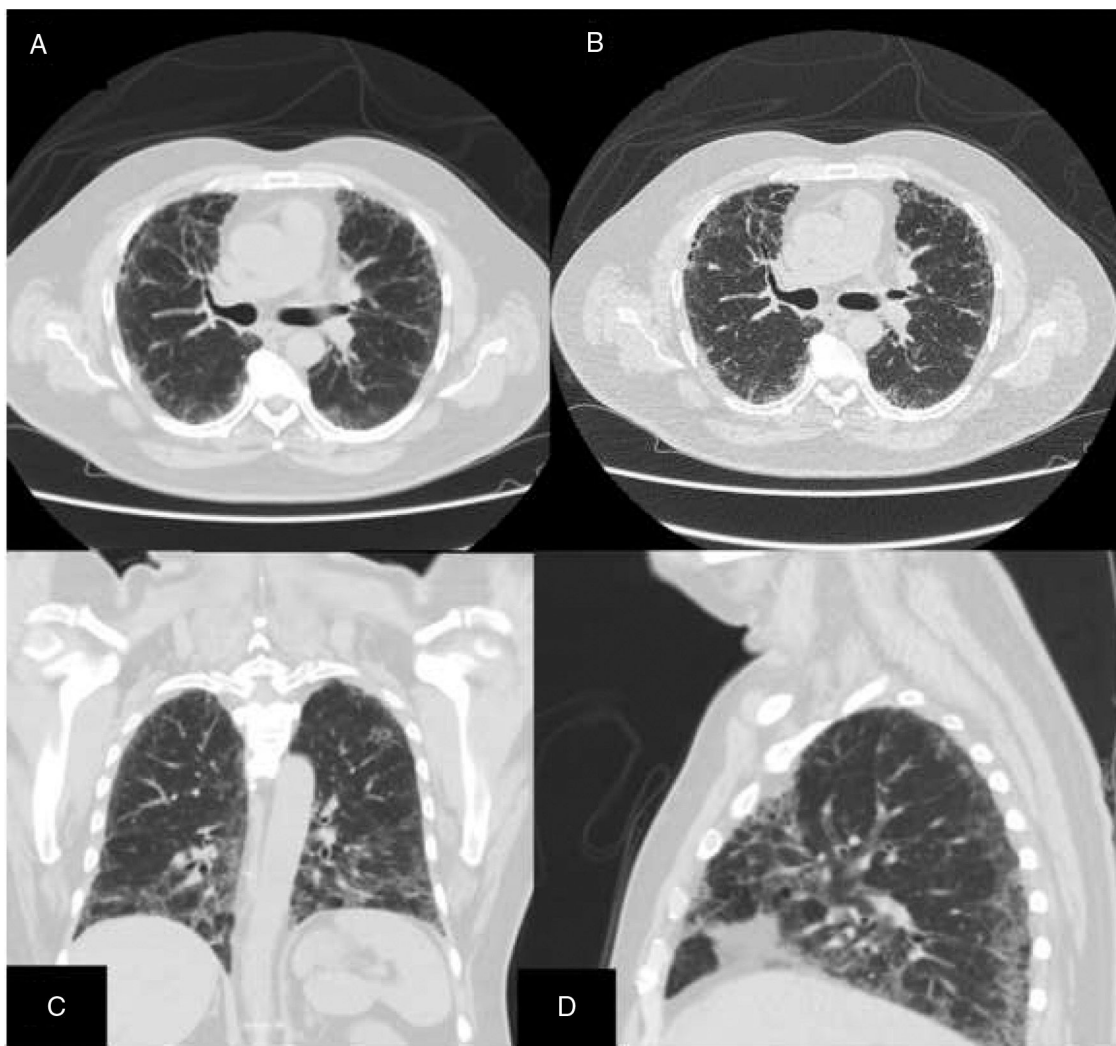
All anti-Ro/SSA positive cases were females, there was a positive correlation with sicca symptoms ( $r = .15$ ,  $p = .02$ ), RF titer ( $r = .263$ ,  $p < .001$ ), ANA ( $r = .504$ ,  $p < .001$ ), DAS28-ESR ( $r = .15$ ,  $p = .026$ ), and DAS28-CRP ( $r = .195$ ,  $p = .003$ ). Anti-Ro/SSA correlated negatively with sex ( $r = -.216$ ,  $p = .001$ ) being more frequent in female patients and significant negative correlation with haemoglobin level ( $r = -.189$ ,  $p = .004$ ). While Anti-La/SSB antibodies correlated positively with SJC ( $r = .223$ ,  $p = .001$ ), tender joint count TJC ( $r = .221$ ,  $p = .001$ ), ANA ( $r = .367$ ,  $p < .001$ ), DAS-28-ESR ( $r = .177$ ,  $p = .007$ ). Regarding anti-Jo-1 antibodies, a significant moderate positive correlation was found with ILD ( $r = -.431$ ,  $p \leq .001$ ), RF titer ( $r = .137$ ,  $p = .037$ ), ANA ( $r = .251$ ,  $p \leq .001$ ) and a negative association was found with platelets count ( $r = -.167$ ,  $p = .011$ ).

Anti-RNP antibodies were positively associated with disease duration ( $r = .233$ ,  $p \leq .001$ ), ACPA titer ( $r = .291$ ,  $p \leq .001$ ) and ANA ( $r = .161$ ,  $p = .014$ ) and correlated negatively with platelets count ( $r = -.140$ ,  $p = .034$ ). Furthermore anti-Ro/SSA positively correlated with anti-La/SSB ( $r = .478$ ,  $p \leq .001$ ), and no significant correlation was found between anti-Ro/SSA versus anti-Jo-1 ( $r = .028$ ,  $p = .668$ ), and versus anti-RNP ( $r = -.037$ ,  $p = .577$ ). While anti-La/SSB showed no significant correlation with neither anti-Jo-1 ( $r = -.032$ ,  $p = .632$ ) nor anti-RNP ( $r = -.020$ ,  $p = .763$ ). Anti-Jo-1 showed no significant correlations with anti-RNP ( $r = -.014$ ,  $p = .833$ ). In this series ANA showed no positive correlations with biologic therapy ( $r = .005$ ,  $p = .938$ ). Furthermore no other associations were found between use of biological therapy versus other tested anti-ENA autoantibodies: anti-Ro/SSA ( $p = .618$ ), anti-La/SSB ( $p = .905$ ), Anti-Jo-1 ( $p = .106$ ) and anti-RNP ( $p = .669$ ). Moreover no significant association was observed between MTX dose and ILD in our study ( $p = .701$ ).

## Discussion

The current study was carried out to examine the prevalence of autoantibodies against ENAs in a cohort of RA patients and to examine its association with other laboratory findings notably, RF, ACPA antibodies, ANA and other clinical and disease characteristics. In our study, RF was positive in 101 (43.9%) cases and ACPA was positive in 220 (95.7%), which is comparable with a previous study in a different series of early RA cases.<sup>28</sup> An established fact is that ACPA is more sensitive than RF and may appear much earlier in the course of RA. Moreover positive ACPA can predict future development of RA in early undifferentiated arthritis,<sup>28</sup> and play other diagnostic roles in patients with clinically suspected inflammatory arthralgia.<sup>1</sup> In palindromic rheumatism (PR), hand joint involvement and positive ACPA are good predictors for RA development after 1 year of follow-up.<sup>29</sup> Given that tight control strategy in PR by early use of DMARDs may control PR and prevent disease progression to RA.<sup>30</sup>

In the current study, ANA was positive in 58 (25.2%), anti-Ro/SSA in 31 (13.5%), anti-La/SSB in 10 (4.3%), anti-Jo-1 in 5 (2.2%), anti-RNP in 2 (.9%). Although a higher prevalence of ANA was observed in our study none of our patients showed any symptoms or signs suggestive of antinuclear antibody (ANA)-associated rheumatic diseases (AARD) as detailed in the methods section and none of the patients tested positive for anti-Sm which is quite specific for SLE diagnosis. In our study ANA showed no positive association with anti-TNF therapy ( $r = .005$ ,  $p = .938$ ). Furthermore no other associations were found between use of biological therapy versus other tested anti-ENA autoantibodies anti-Ro/SSA ( $p = .618$ ), anti-La/SSB ( $p = .905$ ), Anti-Jo-1 ( $p = .106$ ) and anti-RNP ( $p = .669$ ). Moreover no significant



**Fig. 3.** (A) and (B) Axial routine chest CT lung window, (C) and (D) coronal and sagittal reconstructed images (lung window) showing bilateral pulmonary sub pleural interstitial infiltrates with tendency to honey combing and traction bronchiectatic changes; (C) and (D) are showing the same changes.

association was observed between MTX dose and ILD in our study ( $p = .701$ ). Comparable to our findings and in the most recent work higher prevalence of ANA was observed in Mexican patients with early RA reaching 25.8% in control individuals.<sup>31</sup>

Anti-Ro/SSA and anti-La/SSB autoantibodies recognize different epitopes on small RNAs associated polypeptides. At least two major proteins are identified called Ro/SSA: a 52 kDa (Ro) and a 60 kDa (Ro), while for La/SSB only one protein with 48 kDa.<sup>3</sup> Important to note is that anti-Ro/SSA antibodies can be detected in the sera of 30% of patients with SLE, even during the preclinical phase (latent lupus). In previous studies anti-Ro/SSA was strongly associated (90%) with some subgroups of SLE such as old-onset (>50 y), and in patients with hereditary deficiency of complements components C2 or C4 or C1q with lupus-like syndrome, pSS (50–60%), undifferentiated connective tissue disease (UCTD),<sup>23</sup> and also in RA patients with different percentages.<sup>2–4</sup>

In the current study, anti-Ro/SSA correlated positively with Sjögren's syndrome and its associated sicca symptoms ( $p = .02$ ), RF titer ( $p < .001$ ) and ANA ( $p < .001$ ). Consistent with our findings, Skopouli et al.<sup>2</sup> observed that positive anti-Ro/SSA antibodies seem to characterize a distinct group of RA patients who are exclusively females, and with high prevalence of sicca symptoms, and more frequent positive RF and ANAs when compared to those RA patients with negative anti-Ro/SSA autoantibody. In contrast

Zanlorenzi et al.<sup>3</sup> studied a total 385 with RA and found no significant associations between positive anti-Ro/SSA versus gender, DAS-28, functional classification, extra-articular features, positive RF, and positive ACPA. While Cavazzana et al.<sup>3</sup> reported that anti-Ro/SSA positive RA patients presented a peculiar clinical picture characterized by extra-articular features notably amyloidosis, and episcleritis.

In our study anti-La/SSB antibody was positive in 10 (4.3%) patients and positively associated with anti-Ro/SSA ( $p \leq .001$ ), anti-JO-1 and ANA. Recently Jardel et al.<sup>32</sup> evaluated the sera of 1173 patients with suspected UCTD for anti-Ro/SSA and/or anti-La/SSB autoantibodies. They identified 84 patients (13.5%) with isolated positive anti-Ro/SSA, out of these 75 patients with known clinical data, 15 (20%) were diagnosed with a definitive CTD including: SLE (5%,  $n = 4$ ), RA (5%,  $n = 4$ ), AIM (3%,  $n = 2$ ), pSS (1%,  $n = 1$ ), SSc (1%,  $n = 1$ ), UCTD (3%,  $n = 2$ ), and mixed CTD (1%,  $n = 1$ ). The authors concluded that positive anti-La/SSB, without anti-Ro/SSA autoantibody was not associated with CTD. In our study RA patients showed a positive association between anti-Ro/SSA and anti-La/SSB and only anti-Ro/SSA was significantly and positively correlated with sicca symptoms.

An interesting finding in our study is the positive anti-Jo-1 in five (2.2%) patients, and two of them had aggressive ILD who can be classified as RA-ASS overlapping syndrome. Anti-Jo-1

**Table 1**  
Demographic features, disease characteristics, disease activity indices and laboratory findings among the studied group of patients.

Variables	RA patients (n = 230) Mean ± SD or n (%)
Age	47.06 ± 11.75
Sex F/M, n (%)	177 (77)/53 (23)
Age at onset (years)	43.12 ± 14.89
Disease duration (months)	64.11 ± 54.72
SCN	3 (1.3)
SJC	5.98 ± 2.79
TJC	5.99 ± 2.81
ILD	9(3.9)
ESR 1st hour (mm/h)	45.13 ± 23.66
CRP (mg/dl)	2.27 ± 1.79
Haemoglobin (gm/dl)	11.88 ± 1.49
WBCs count (× 10 <sup>3</sup> /mm <sup>3</sup> )	10.257 ± 29.24
Platelet count (× 10 <sup>3</sup> /mm <sup>3</sup> )	342.27 ± 76.07
RF positive (10 <sup>3</sup> /μL)	101 (43.9)
RF titer	80.06 ± 133.88
ACPA positive	220 (95.7)
ACPA titer	361.46 ± 398.93
ANA	58 (25.2)
Anti-RO	31 (13.5)
Anti-LA	10 (4.3)
Anti-Jo-1	5 (2.2)
Anti-RNP	2 (.9)
DAS28-ESR	4.63 ± .66
DAS28-CRP	3.40 ± .68
Sharp/van der Heijde scoring	35.30 ± 18.99
Methotrexate	209 (90.8)
Hydroxychloroquine	230 (100)
Leflunomide	25 (10.9)
Rituximab	13 (5.7)
Abatacept	5 (2.2)
Anti-TNF	6 (2.6)

Rheumatoid arthritis (RA); subcutaneous nodules (SCN); swollen joint count (SJC); tender joint count (TJC); interstitial lung disease (ILD); erythrocyte sedimentation rate (ESR); C-reactive protein (CRP); white blood cells (WBCs); rheumatoid factor (RF); anticitrullinated peptide/protein antibodies (ACPA); disease activity score (DAS); subcutaneous nodules (SCN); rheumatoid factor (RF); anti-cyclic citrullinated peptide (anti-CCP).

correlated positively with ILD and RF titer. One patient had a high RF titer, negative ACPA and positive ANA, erosions typical for RA, positive anti-Jo-1, while the other case was seropositive for RF, ACPA and ANA, typical erosions consistent with the diagnosis of RA and concomitant ILD and we classified the two cases with ILD as having RA-ASS overlap. Methotrexate (MTX) induced hypersensitivity pneumonitis cannot explain acute respiratory distress syndrome as observed in two of our patients with RA-ASS overlapping syndrome. First MTX induced hypersensitivity pneumonitis usually occurs in the initial weeks to months of starting treatment with MTX as acute drug reaction<sup>33</sup>; second no significant association was observed between MTX dose and ILD in our study ( $p = .701$ ); third and most important it is not known that MTX can induce positive anti-Jo-1 autoantibodies which are now considered the hallmark diagnostic autoantibody in ASS.

ASS is an uncommon multisystem CTD characterized by the presence of circulating anti-aminoacyl t-RNA synthetase antibodies and ILD which is considered a constant finding in this domain, often with AIM and erosive polyarthritis.<sup>34</sup> Atypical features may include hand calcinosis and/or absent myositis.<sup>35,36</sup> In previous studies was shown that ACPA-positive ASS patients may show overlapping features of RA-ASS and may develop refractory erosive arthritis.<sup>5,36</sup> Only a few case reports describe ASS complicating the course of RA.<sup>5–11</sup>

In general, there is little justification for requesting tests for anti-ENA autoantibodies unless the ANA test is positive. Previously was recommended to perform an initial ANA screening test followed by confirmatory anti-ENA and anti-dsDNA antibody, if needed.<sup>37</sup> Aggarwal et al.<sup>38</sup> recently explained that a negative ANA does not indicate necessarily negative AIM associated autoantibodies (e.g. anti-Jo-1 and other antisynthetase autoantibodies) as a screening if ASS is clinically suspected. In our study none of our RA patients with positive anti-Jo-1 ( $n = 5$ ) showed clinical features of myositis and all had normal CK levels. The latter finding was supported by those of Aggarwal et al.<sup>38</sup> who pointed out that ILD can be associated with ASS related autoantibodies, even in the absence of clinically

**Table 2**  
Correlation between extractable nuclear antigens and clinical features, laboratory findings and disease activity indices in RA patients.

Variables	ENAs in RA patients (n = 230)							
	Pearson correlation							
	Anti-Ro		Anti-La		Anti-Jo-1		Anti-RNP	
r	p	r	p	r	p	r	p	
Age	-.064	.335	-.096	.148	.114	.085	.039	.551
Sex	-.216	.001**	-.117	.077	.060	.365	-.051	.439
Age at onset (years)	-.082	.216	-.082	.215	.065	.326	-.051	.440
Disease duration (months)	-.014	.829	-.014	.829	.042	.523	.233	<.001**
SCN	.067	.313	-.025	.712	-.017	.796	-.011	.871
SJC	.117	.076	.223	.001**	.076	.251	.068	.305
TJC	.114	.084	.221	.001**	.075	.260	.067	.312
ILD	.052	.435	-.043	.516	.431	<.001**	-.019	.776
Sicca symptoms	.153	.020*	.091	.168	.064	.336	.117	.077
ESR 1st hour (mm/h)	.073	.269	.092	.165	.022	.741	.023	.726
CRP (mg/dl)	.093	.160	.127	.055	.069	.300	.043	.515
Haemoglobin (gm/dl)	-.189	.004**	-.125	.059	.124	.060	-.068	.305
WBCs count	-.038	.562	-.015	.816	-.026	.694	-.017	.795
Platelet count	.088	.186	.123	.063	-.167	.011*	-.140	.034*
RF titer	.263	<.001**	.033	.620	.137	.037*	-.055	.411
ACPA titer	.008	.901	.049	.462	.021	.749	.291	<.001**
ANA	.504	<.001**	.367	<.001**	.251	<.001**	.161	.014*
DAS28-ESR	.147	.026*	.177	.007**	.068	.301	.076	.252
DAS28-CRP	.195	.003**	.206	.002	.077	.248	.097	.144
Sharp/van der Heijde scoring	.115	.083	.049	.455	-.013	.840	.073	.273

Rheumatoid arthritis (RA); subcutaneous nodules (SCN); swollen joint count (SJC); tender joint count (TJC); interstitial lung disease (ILD); erythrocyte sedimentation rate (ESR); C-reactive protein (CRP); white blood cells (WBCs); rheumatoid factor (RF); anticitrullinated peptide/protein antibodies (ACPA); antinuclear antibody (ANA); disease activity score (DAS).

\* Significant  $p < .05$

\*\* Highly significant  $p < .001$ .

apparent AIM. Although RA and ASS are distinct clinical syndromes, their co-occurrence may be rarely encountered and by early diagnosis serious or even fatal ILD can be prevented by early and appropriate treatment.<sup>5–10</sup>

A limitation of our study is that many studies were done regarding ENA autoantibodies including ANA, anti-Ro and anti-La in relation to secondary Sjogren's syndrome. The strength of our study is that only few studies have systematically investigated the different types of autoantibodies against ENA in a large series of RA patients correlating the findings with clinical manifestations. To our knowledge such type of study was not done before in Egypt or other Middle Eastern countries.

A further strength is that we studied the whole set of ENA autoantibodies and also assessed its relation to ANA and other diagnostic markers of RA including both RF and anti-CCP antibodies. We also raised important issues that negative ANA, does not always indicate that other anti-ENA autoantibodies are necessarily negative and we should change our way of thinking about this clinically relevant issue. If anti-Jo1 is positive in established RA patient, extra attention should be paid for any new onset of chest symptoms to avoid serious consequences.

### Conclusions and recommendations

This study showed that ANA is frequently positive (25.2%) in RA patients with a much higher figure than in controls. Negative ANA in RA patients does not indicate negative anti-ENAs autoantibodies as also shown in AIM<sup>29</sup> and anti-Jo1 should be ordered in case of RA patients with explosive and rapidly progressive ILD'. Autoantibodies against ENA are important and should be determined at least once in RA patients at disease onset. ASS is a rare systemic CTD and may complicate the course of RA, and rheumatologists should be aware of this rare under recognized clinical entity, especially in established RA patients with acute onset of respiratory distress and rapidly progressive ILD.

### Conflict of interest

None of the authors has any conflict of interest regarding this study.

### Acknowledgements

We thank the patients for their cooperation in the study. Mr Chris Hemke for translating the abstract in Spanish.

### References

- Hermosillo-Villafranca JA, Guillén-Lozoya AH, Vega-Morales D, Pérez-Onofre I, Gracia-Aréchiga TS, Garza-Elizondo MA, et al. Role of rheumatoid factor isotypes and anti-citrullinated peptide antibodies in the differential diagnosis of non-selected patients with inflammatory arthralgia. *Reumatol Clin.* 2019;30051–8, <http://dx.doi.org/10.1016/j.reuma.2019.03.001>, pii: S1699-258X(19).
- Skopouli FN, Andonopoulos AP, Moutsopoulos HM. Clinical implications of the presence of anti-Ro (SSA) antibodies in patients with rheumatoid arthritis. *J Autoimmun.* 1988;1:381–8.
- Zanlorenzi L, AzevedoPde O, Silva MB, Skare T. Anti-Ro antibodies in rheumatoid arthritis. *Acta Reumatol Port.* 2012;37:149–52.
- Cavazzana I, Franceschini F, Quinzanini M, Manera C, Del Papa N, Maglione W, et al. Anti-Ro/SSA antibodies in rheumatoid arthritis: clinical and immunologic associations. *Clin Exp Rheumatol.* 2006;24:59–64.
- Meyer A, Lefevre G, Bierry G, Duval A, Ottaviani S, Meyer O, et al. Club Rheumatismes et Inflammation. In antisynthetase syndrome ACPA are associated with severe and erosive arthritis: an overlapping rheumatoid arthritis and antisynthetase syndrome. *Medicine (Baltimore).* 2015;94:e523.
- Nagashima T, Iwamoto M, Minota S. Antisynthetase syndrome associated with long-standing rheumatoid arthritis. *Rheumatol Int.* 2011;31:705–6.
- Wendling D, Golden C, Monet M, Verhoeven F, Guillot X, Prati C. Rheumatoid arthritis and antisynthetase syndrome. A three cases report. *Joint Bone Spine.* 2016;83:739–40.
- Ishikawa Y, Yukawa N, Kawabata D, Ohmura K, Fujii T, x UsuiT, et al. A case of antisynthetase syndrome in a rheumatoid arthritis patient with anti-PL-12 antibody following treatment with etanercept. *Clin Rheumatol.* 2011;30:429–32.
- Park CK, Kim TJ, Cho YN, Kim IS, Lee HJ, Lee KE, et al. Development of anti-synthetase syndrome in a patient with rheumatoid arthritis. *Rheumatol Int.* 2011;31:529–32.
- Cavagna L, Fusetti C, Montecucco C, Caporali R. Anticyclic citrullinated peptide antibodies as markers of erosive arthritis in antisynthetase syndrome. *J Rheumatol.* 2010;37:1967.
- Emad Y, Ragab Y, Abd-El salam M, Rasker JJ. Antisynthetase syndrome complicating the course of established case with rheumatoid arthritis: a rare and under-recognized overlapping disease. *Reumatol Clin.* 2018;S1699–258X:30116–25, <http://dx.doi.org/10.1016/j.reuma.2018.06.002>.
- Mahler M, Meroni PL, Bossuyt X, Fritzler MJ. Current concepts and future directions for the assessment of autoantibodies to cellular antigens referred to as anti-nuclear antibodies. *J Immunol Res.* 2014;315179, doi: 10.1155/2014/315179.
- Agarwal S, Harper J, Kiely PD. Concentration of antibodies to extractable nuclear antigens and disease activity in systemic lupus erythematosus. *Lupus.* 2009;18:407–12.
- Emad Y, Gheita T, Darweesh H, Klooster P, Gamal R, Fathi H, et al. Antibodies to extractable nuclear antigens (ENAs) in systemic lupus erythematosus patients: correlations with clinical manifestations and disease activity. *Reumatismo.* 2018;70:85–91.
- Faria AC, Barcellos KS, Andrade LE. Longitudinal fluctuation of antibodies to extractable nuclear antigens in systemic lupus erythematosus. *J Rheumatol.* 2005;32:1267–72.
- Fredi M, Cavazzana I, Quinzanini M, Taraborelli M, Cartella S, Tincani A, et al. Rare autoantibodies to cellular antigens in systemic lupus erythematosus. *Lupus.* 2014;23:672–5.
- Arbuckle MR, McClain MT, Rubertone MV, Scofield RH, Dennis GJ, James JA, et al. Development of autoantibodies before the clinical onset of systemic lupus erythematosus. *N Engl J Med.* 2003;349:1526–33.
- Flechsig A, Rose T, Barkhudarova F, Strauss R, Klotsche J, Dähnrich C, et al. What is the clinical significance of anti-Sm antibodies in systemic lupus erythematosus? A comparison with anti-dsDNA antibodies and C3. *Clin Exp Rheumatol.* 2017;35:598–606.
- Ahn SS, Yoo BW, Song JJ, Park YB, Lee SK, Lee SW. Anti-Sm is associated with the early poor outcome of lupus nephritis. *Int J Rheum Dis.* 2016;19:897–902.
- Weir DM, Holborow EJ, Johnson GDA. Clinical study of serum antinuclear factor. *Br Med J.* 1961;1:933–7, 1.
- Rasker JJ, Davis P, Bacon PA. Seronegative chronic polyarthritis: clinical and serological correlates. *Annals Rheum Dis.* 1980;39:550–3.
- Catalano MA, Carson DA, Stastny P, Freer S, Vaughan JH. Correlation between anti-RANA and anti-EBNA titers in normal subjects with and without HLA-DRw4. *Arthritis Rheum.* 1980;23:1049–52.
- Ferrell PB, Aitchison CT, Pearson GR, Tan EM. Seroepidemiological study of relationships between Epstein-Barr virus and rheumatoid arthritis. *J Clin Invest.* 1981;67:681–7.
- Venables PJ, Roffe LM, Erhardt CC, Maini RN, Edwards JM, Porter AD. Titers of antibodies to RANA in rheumatoid arthritis and normal sera relationship to Epstein-Barr virus infection. *Arthritis Rheum.* 1981;24:1459–68.
- Reyes PA, Maluf JG, Vaughan JH. The incidence of anti-RANA in Mexican Mestizo populations with rheumatoid arthritis or other conditions. *J Rheumatol.* 1983;10:305–8.
- Aletaha D, Neogi T, Silman AJ, Funovits J, Felson DT, Bingham CO 3rd, et al. Rheumatoid arthritis classification criteria: an American College of Rheumatology/European League Against Rheumatism collaborative initiative. *Ann Rheum Dis.* 2010;69:1580–8.
- Sharp JT, Lidsky MD, Collins LC, Moreland J. Methods of scoring the progression of radiologic changes in rheumatoid arthritis. Correlation of radiologic, clinical and laboratory abnormalities. *Arthritis Rheum.* 1971;14:706–20.
- Emad Y, Shehata M, Ragab Y, Saad A, Hamza H, Abou-Zeid A. Prevalence and predictive value of anti-cyclic citrullinated protein antibodies for future development of rheumatoid arthritis in early undifferentiated arthritis. *Mod Rheumatol.* 2010;20:358–65.
- Emad Y, Anbar A, Abo-Elyoun I, El-Shaarawy N, Al-Hanafi H, Darwish H, et al. In palindromic rheumatism, hand joint involvement and positive anti-CCP antibodies predict RA development after 1 year of follow-up. *Clin Rheumatol.* 2014;33:791–7.
- Khabbazi A, Mirza-Aghazadeh-Attari M, Goli MT, Mahdavi AM, Hajjalilo M, Rashtchizadeh N. Is palindromic rheumatism a pre-rheumatoid arthritis condition? Low incidence of rheumatoid arthritis in palindromic rheumatism patients treated with tight control strategy. *Reumatol Clin.* 2019;13, <http://dx.doi.org/10.1016/j.reuma.2019.01.002>, pii: S1699-258X(19)30030-0.
- Romero-Álvarez V, Acero-Molina DA, Beltrán-Ostos A, Bello-Gualteros JM, Romero-Sánchez M. Frequency of ANA/DFS70 in relatives of patients with rheumatoid arthritis compared to patients with rheumatoid arthritis and a healthy population, and its association with health status. *Reumatol Clin.* 2019;16, <http://dx.doi.org/10.1016/j.reuma.2019.02.003>, S1699-258X(19)30058-0.
- Jardel S, Fabien N, Hot A, Vukusic S, Tebib J, Cottin V, et al. Isolated positive anti-SS-B autoantibodies are not related to clinical features of systemic autoimmune diseases: results from a routine population survey. *PLoS One.* 2017;12:e0185104, doi: 10.1371/journal.pone.0185104. eCollection. 2017.

33. Salehi M, Miller R, Khaing M. Methotrexate-induced hypersensitivity pneumonitis appearing after 30 years of use: a case report. *J Med Case Rep.* 2017;11:174, 28, doi: 10.1186/s13256-017-1333-0.
34. Maturu VN, Lakshman A, Bal A, Dhir V, Sharma A, Garg M, et al. Antisynthetase syndrome: an under-recognized cause of interstitial lung disease. *Lung India.* 2016;33:20–6.
35. García Rodríguez C, SalvatierraOssorio J, Morales Garrido P, Raya Álvarez EG. Calcinosis in hands and antisynthetase syndrome without muscle involvement. *Reumatol Clin.* 2016;12:60–1.
36. Júdez Navarro E, MartínezCarretero M, Martínez Jiménez GF. Antisynthetase syndrome without muscle involvement. *Reumatol Clin.* 2007;3:276–7.
37. Phan TG, Wong RC, Adelstein S. Autoantibodies to extractable nuclear antigens: making detection and interpretation more meaningful. *Clin Diagn Lab Immunol.* 2002;9:1–7.
38. Aggarwal R, Dhillon N, Fertig N, Koontz D, Qi Z, Oddis CVA. Negative antinuclear antibody does not indicate autoantibody negativity in myositis: role of anticytoplasmic antibody as a screening test for antisynthetase syndrome. *J Rheumatol.* 2017;44:223–9.