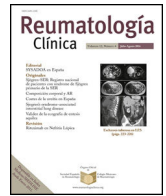




Sociedad Española  
de Reumatología -  
Colegio Mexicano  
de Reumatología

# Reumatología Clínica

[www.reumatologiaclinica.org](http://www.reumatologiaclinica.org)



## Images in Clinical Rheumatology

### Scapholunate ligament: A fundamental structure in the stability of the wrist<sup>☆</sup>



### Ligamento escafosemilunar: una estructura fundamental en la estabilidad de la muñeca

Darío Herrán de la Gala,<sup>a,\*</sup> María Sáenz Aldea<sup>b</sup>

<sup>a</sup> Servicio de Radiodiagnóstico, Hospital Universitario Marqués de Valdecilla, Santander, Spain

<sup>b</sup> Medicina Familiar y Comunitaria, Centro de Salud Dávila, Santander, Spain

#### ARTICLE INFO

##### Article history:

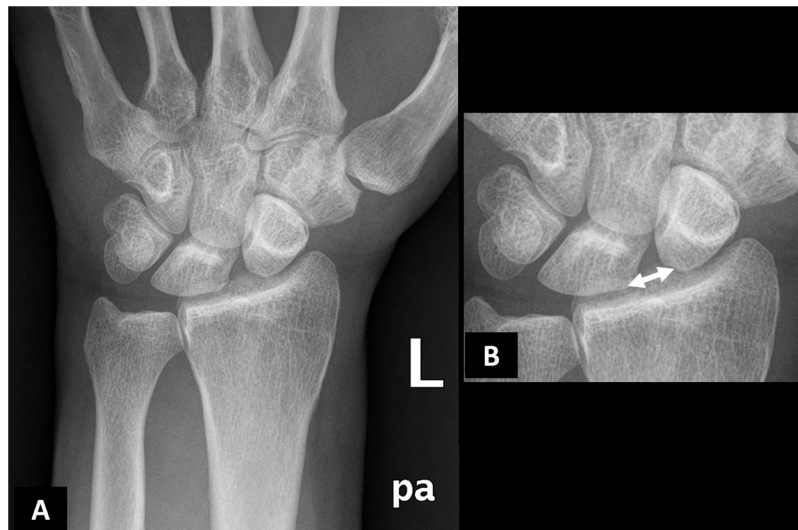
Received 12 April 2021

Accepted 24 May 2021

Available online 10 November 2021

The scapholunate ligament complex is a set of ligaments that provide attachment between the scaphoid and lunate bones of the carpus. It is divided into 3 components: dorsal, volar and secondary

stabilisers. Of these, the dorsal is the thickest and strongest, and its rupture is the most important clinically and biomechanically<sup>1</sup>. Its rupture is secondary to trauma, although it can also rupture

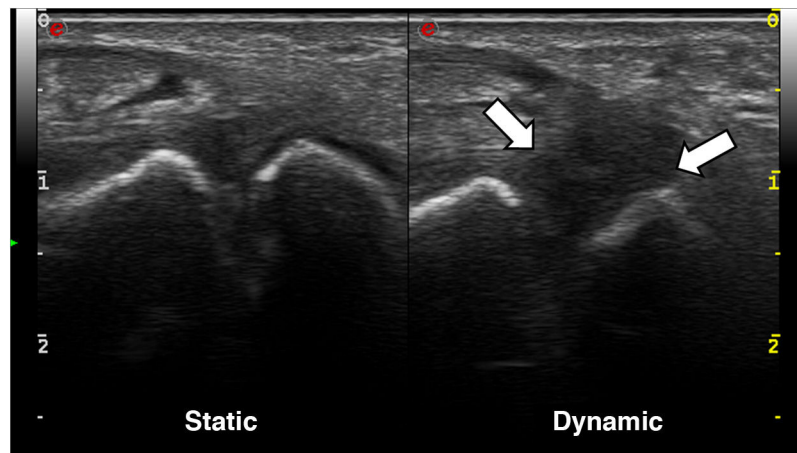


**Fig. 1.** Posteroanterior plain radiograph of the left wrist (A) with magnified detail (B). There is a significant diastasis between the lunate and scaphoid bones of the carpus (double-headed arrow), which in the manual measurement was 3.5 mm. In addition, a rotatory subluxation of the scaphoid bone (B) is seen, which is an indirect indicator of scapholunate ligament injury, although it is visible in other injuries of different wrist stabilisers.

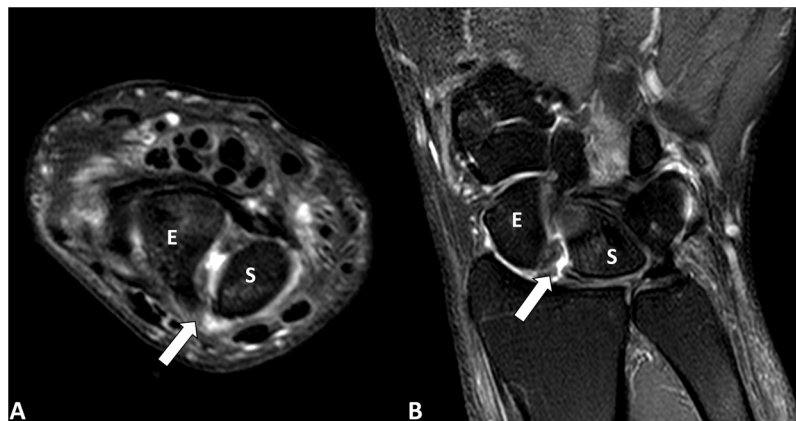
<sup>☆</sup> Please cite this article as: Herrán de la Gala D, Sáenz Aldea M. Ligamento escafosemilunar: una estructura fundamental en la estabilidad de la muñeca. Reumatol Clin. 2022;18:186–187.

\* Corresponding author.

E-mail address: [herrandario@gmail.com](mailto:herrandario@gmail.com) (D. Herrán de la Gala).



**Fig. 2.** Ultrasound images of the wrist with a high-frequency linear probe; dorsal approach. In the static scan (left image), the scapholunate space appears to be preserved, although a certain hypoechogenicity of the scapholunate ligament can be sensed. However, in the dynamic scan (right image), there is a marked hypoechogenicity with significant scapholunate diastasis, without identifying the ligament with definition, in the context of its rupture.



**Fig. 3.** Magnetic resonance imaging. Axial (A) and coronal (B) images of the left wrist in T2-weighted sequences with fat suppression (SPAIR). There is a complete rupture of the dorsal portion of the scapholunate ligament (arrow) producing a significant diastasis between the scaphoid bone (E) and the lunate (S) with minimal effusion and signs of synovitis. There are no foci of MRI signal similar to bone oedema suggestive of inflammation/arthritis or significant osteoarthritic changes.

atraumatically in chronic gout. Diagnosis is often delayed, as it is a clinically and radiologically underdiagnosed finding due to its lack of specificity: plain radiography may be normal in the acute setting<sup>2</sup> and is the test of choice. Over time, there is a diastasis between the lunate and the scaphoid greater than 3 mm on the posteroanterior wrist plain radiograph<sup>3</sup>. This condition predisposes to the development of early wrist osteoarthritis secondary to carpal instability, following a pattern known as SLAC wrist (ScaphoLunate Advanced Collapse)<sup>4</sup>. Full characterisation of the degree and severity of ligamentous injury is assessed with wrist MRI<sup>4,5</sup>. Based on the patient's age and activity, a conservative or surgical approach may be considered<sup>3,6</sup>.

The case presented is that of a 30-year-old left-handed male who consulted for episodes of intermittent chronic pain in the dorsal aspect of the left wrist, which partially subsided after taking anti-inflammatory drugs. The condition began following an accidental fall from his height 2 years earlier, for which he did not consult. A posteroanterior wrist X-ray showed a scapholunate diastasis of 3.5 mm and a rotatory subluxation of the scaphoid (Fig. 1). The study was completed with ultrasound and magnetic resonance imaging (Figs. 2 and 3), which demonstrated a complete rupture of the dorsal component of the scapholunate ligament. The patient was referred to the Hand Unit for consultation, where surgical treatment with arthroscopic ligamentoplasty was decided.

The scapholunate ligament is a fundamental element in the stability of the wrist. Its rupture is not particularly uncommon and is usually represented in all imaging tests. Therefore, all specialists involved in the management of these patients should be familiar with the radiological semiology of this entity.

#### Conflict of interests

None of the authors have any conflict of interests to declare.

#### References

1. Berger RA. The gross and histologic anatomy of the scapholunate interosseous ligament. *J Hand Surg Am.* 1996;21:170–8.
2. Kuo CE, Wolfe SW. Scapholunate instability: current concepts in diagnosis and management. *J Hand Surg Am.* 2008;33:998–1013.
3. Manuel J, Moran SL. The diagnosis and treatment of scapholunate instability. *Orthop Clin North Am.* 2007;38:261–77.
4. Tischler BT, Diaz LE, Murakami AM, Roemer FW, Goud AR, Arndt WF, et al. Scapholunate advanced collapse: a pictorial review. *Insights Imaging.* 2014;5:407–17.
5. Cerezal L, de Dios Berná-Mestre J, Canga A, Llopis E, Rolon A, Martín-Oliva X, et al. MR and CT arthrography of the wrist. *Semin Musculoskelet Radiol.* 2012;16:027–41.
6. Mullikin I, Srinivasan RC, Bagg M. Current techniques in scapholunate ligament reconstruction. *Orthop Clin North Am.* 2020;51:77–86.